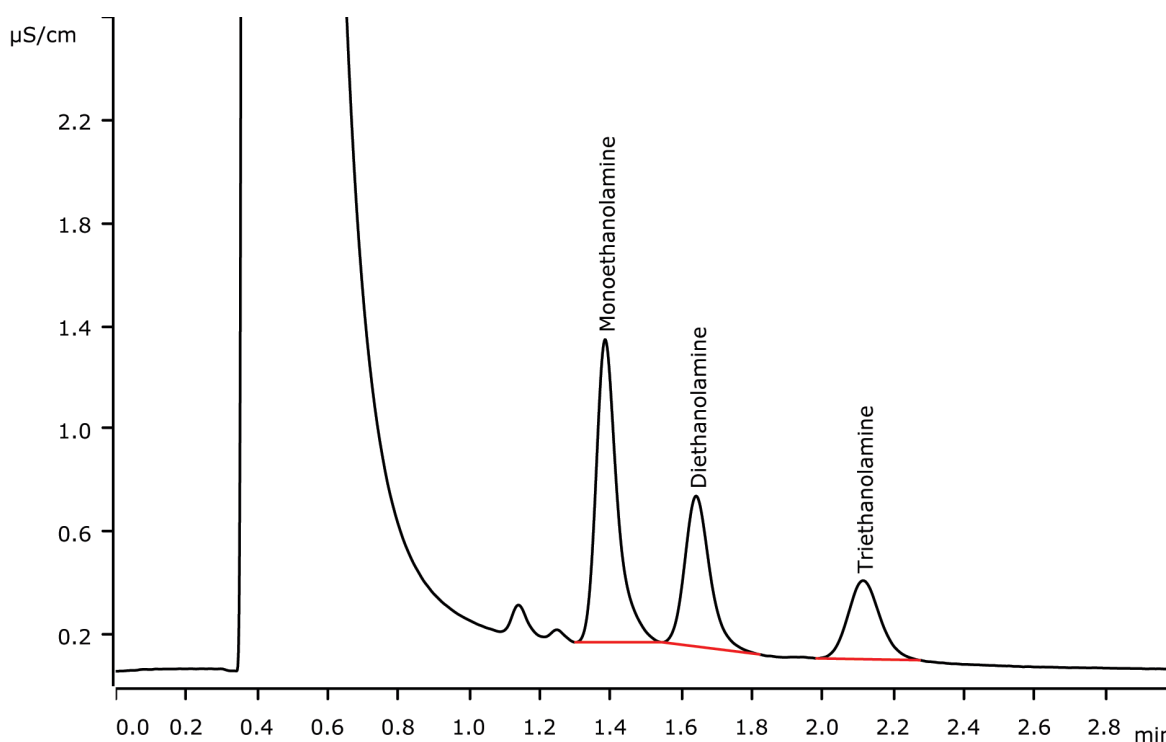


# Fast IC: Separation of ethanolamines within 2.5 minutes



Fast IC means short runtimes and high sample throughput on columns with relatively high flow rates and standard eluent. The separation and determination of mono-, di-, and triethanolamine is accomplished under three minutes using Metrosep C 4 - 150/2.0.

## Results

Cations	Concentration [mg/L]
Monoethanolamine	1.00
Diethanolamine	1.00
Triethanolamine	1.00

## Sample

Standard solution

## Sample preparation

None

## Columns

Metrosep C 4 - 150/2.0	6.1050.220
Metrosep C 4 Guard/2.0	6.1050.600

## Solutions

Eluent (941 Production Module)	Eluent	1.7 mmol/L nitric acid 0.7 mmol/L dipicolinic acid
--------------------------------	--------	---

## Analysis

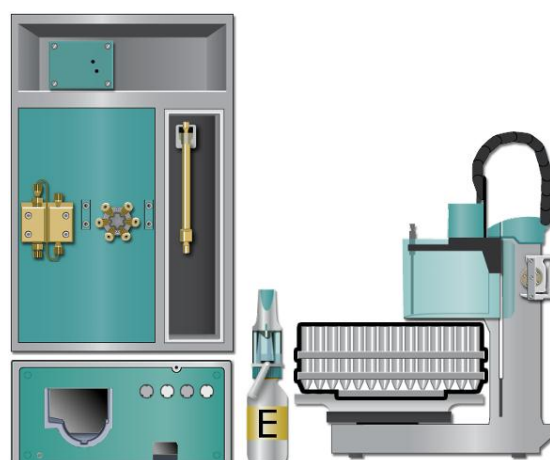
Direct conductivity detection

## Instrumentation

940 Professional IC Vario ONE	2.940.1100
IC Conductivity Detector	2.850.9010
941 Eluent Production Module	2.941.0010
800 Dosino	2.800.0010
858 Professional Sample Processor	2.858.0020

## Parameters

Flow rate	1.1 mL/min
Injection volume	20 µL
P <sub>max</sub>	25 MPa
Recording time	3 min
Column temperature	25 °C



[www.metrohm.com](http://www.metrohm.com)

 **Metrohm**