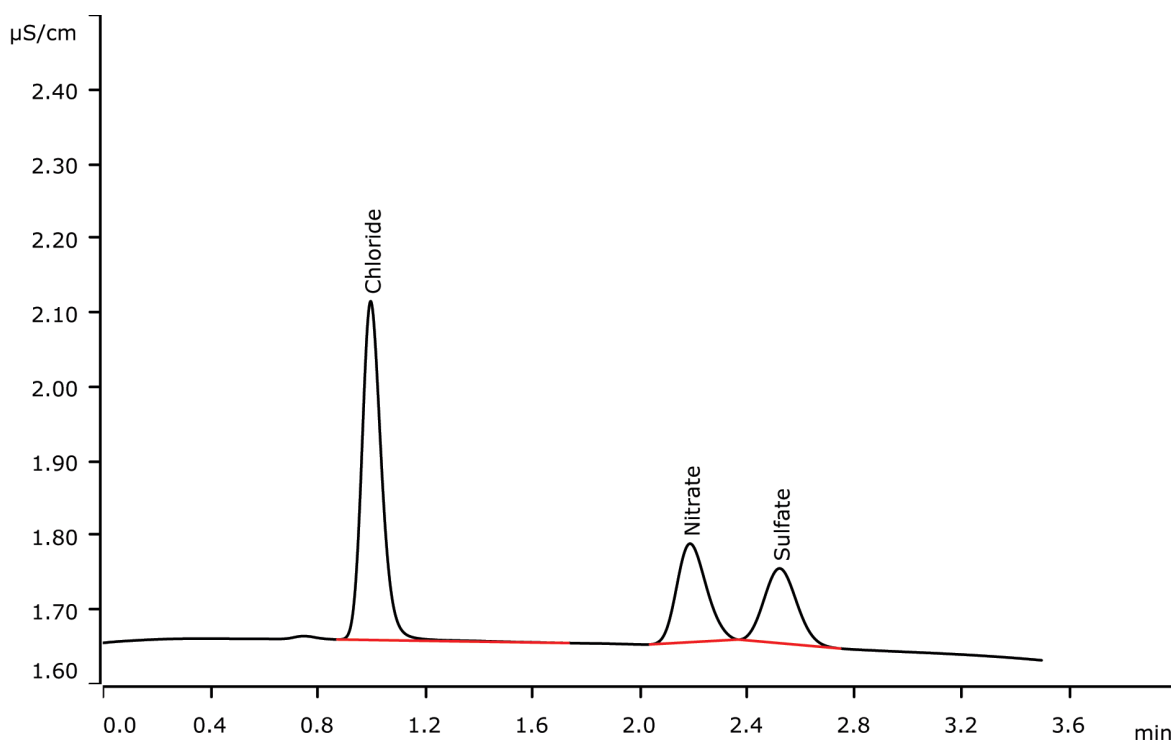


# Fast IC: Drinking water analysis within three minutes



Fast IC means high sample throughput on short columns with relatively high flow rates and strong eluents. Applied to drinking water analysis, this means: determination of chloride, nitrate, and sulfate within three minutes on a Metrosep A Supp 10 - 50/2.0.

## Results

Anion	Concentration [mg/L]
Chloride	3.83
Nitrate	3.83
Sulfate	2.44

### Sample

Drinking water

### Sample preparation

None

### Columns

Metrosep A Supp 10 - 50/2.0	6.1020.250
Metrosep A Supp 10 Guard/2.0	6.1020.600

### Solutions

Eluent (941 Eluent Production Module)	5.0 mmol/L sodium carbonate 5.0 mmol/L sodium hydrogen carbonate
Suppressor regenerant	500 mmol/L sulfuric acid
Rinsing solution	STREAM

### Analysis

Conductivity detection after sequential suppression

### Instrumentation

940 Professional IC Vario ONE/SeS/PP	2.940.1500
IC Conductivity Detector	2.850.9010
941 Eluent Production Module	2.941.0010
800 Dosino	2.800.0010
858 Professional Sample Processor	2.858.0020
MSM Rotor A	6.2832.000

### Parameters

Flow rate	1.0 mL/min
Injection volume	2 µL (MiPT)
P <sub>max</sub>	25 MPa
Recording time	3.2 min
Column temperature	45 °C



[www.metrohm.com](http://www.metrohm.com)

 **Metrohm**