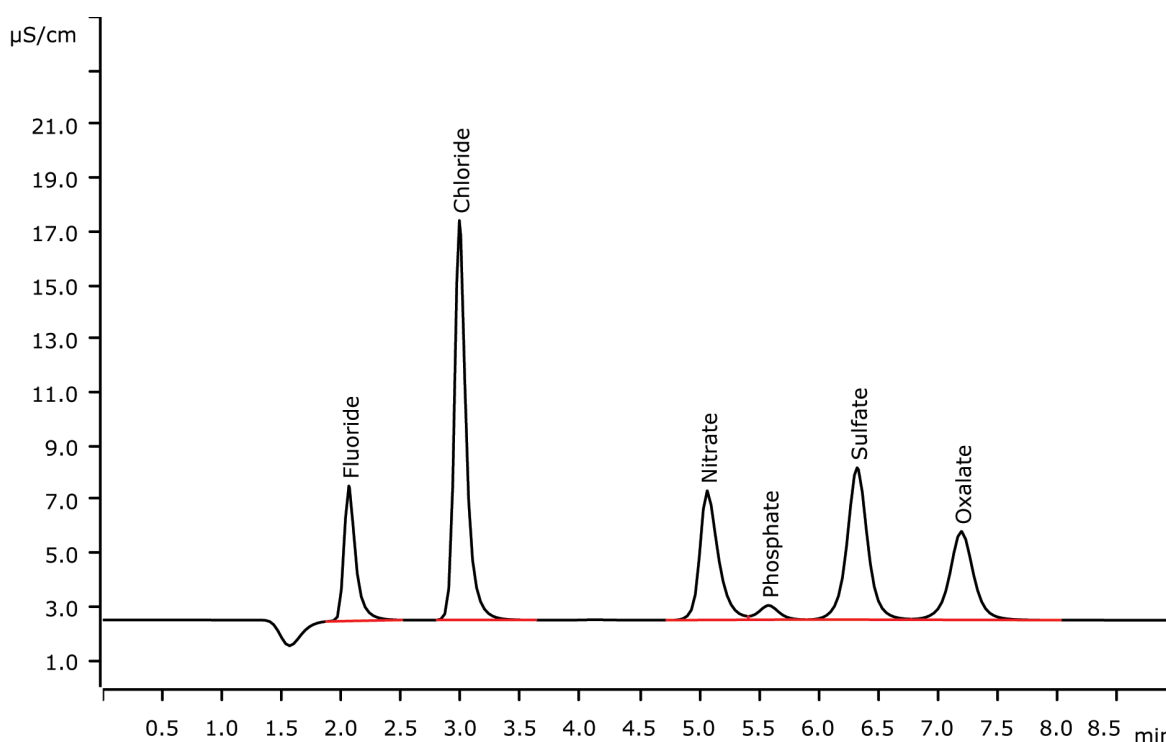


Fast IC: Standard anions and oxalate within less than eight minutes



Fast IC means short runtimes and high sample throughput on short columns with a strong eluent. Fluoride, chloride, nitrate, phosphate, sulfate, and oxalate can be separated within less than eight minutes on a Metrosep A Supp 5 - 100/4.0.

Results

Anion	Concentration [mg/L]
Fluoride	2.5
Chloride	10.0
Nitrate	10.0
Phosphate	2.5
Sulfate	10.0
Oxalate	10.0

Sample

Standard solution

Sample preparation

None

Columns

Metrosep A Supp 5 - 100/4.0	6.1006.510
Metrosep A Supp 4/5 Guard/4.0	6.1006.500

Solutions

Eluent	4.6 mmol/L sodium carbonate 1.3 mmol/L sodium hydrogen carbonate 5% acetone
Suppressor regenerant	100 mmol/L sulfuric acid
Rinsing solution	STREAM

Analysis

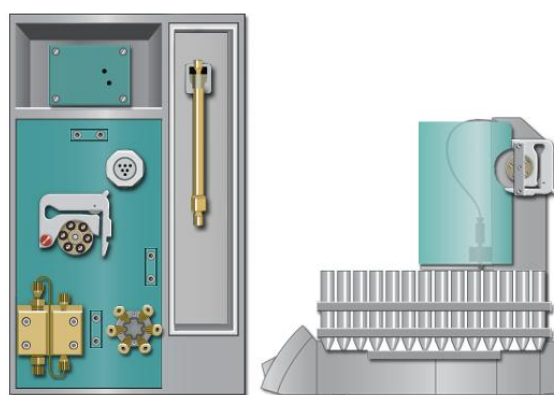
Conductivity detection after sequential suppression

Instrumentation

930 Compct IC Flex Oven/SeS/PP/Deg	2.930.2560
IC Conductivity Detector	2.850.9010
863 Compact IC Autosampler	2.863.0010
MSM Rotor A	6.2832.000

Parameters

Flow rate	0.8 mL/min
Injection volume	20 µL
P _{max}	15 MPa
Recording time	9 min
Column temperature	Room temperature



www.metrohm.com

 **Metrohm**