

IC Application Note No. S-124

Title: Chlorite, chloride, sulfite and oxalate in beer

Summary: Determination of chlorite, chloride, sulfite and oxalate in beer using anion chromatography with conductivity detection after chemical suppression.

Sample: Beer

Sample Preparation: Diluted 1: 10 with 0.1 mmol/L NaOH (100 µL/100 mL formaldehyde) injected through Chromafix C-18 cartridge

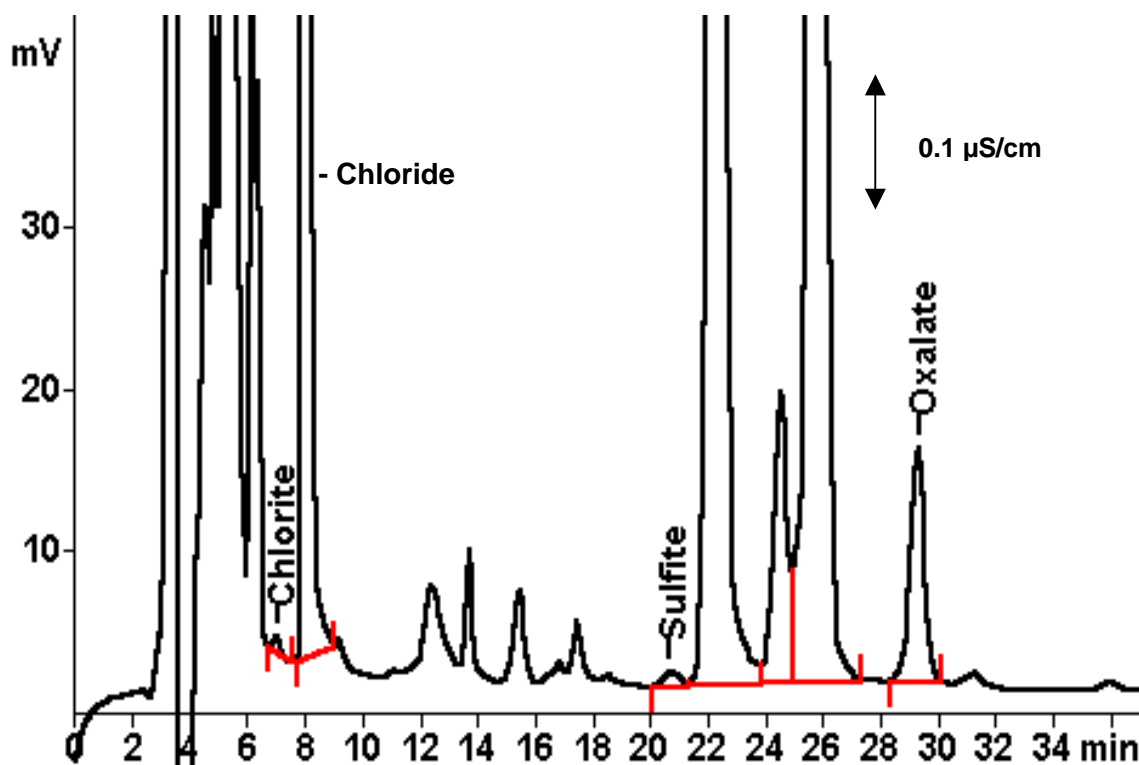
Column: 6.1006.530 Metrosep A SUPP 5-250

Eluent: 1.0 mmol/L sodium hydrogencarbonate, 3.2 mmol/L sodium carbonate

Suppressor: MSM (50 mmol/L H₂SO₄)

Flow: 0.7 mL/min

Injection Volume: 20 µL



Results:	Chlorite mg/L	Chloride mg/L	Sulfite mg/L	Oxalate mg/L
	< 0.5	151	1.89	11.6