

IC Application Note No. S-193

Title: Four anions in beer wort

Summary: Determination of fluoride, chloride, phosphate and sulfate in beer wort using anion chromatography with conductivity detection after chemical suppression.

Sample: Light beer wort

Sample Preparation: Direct injection after filtration (0.45 µm)

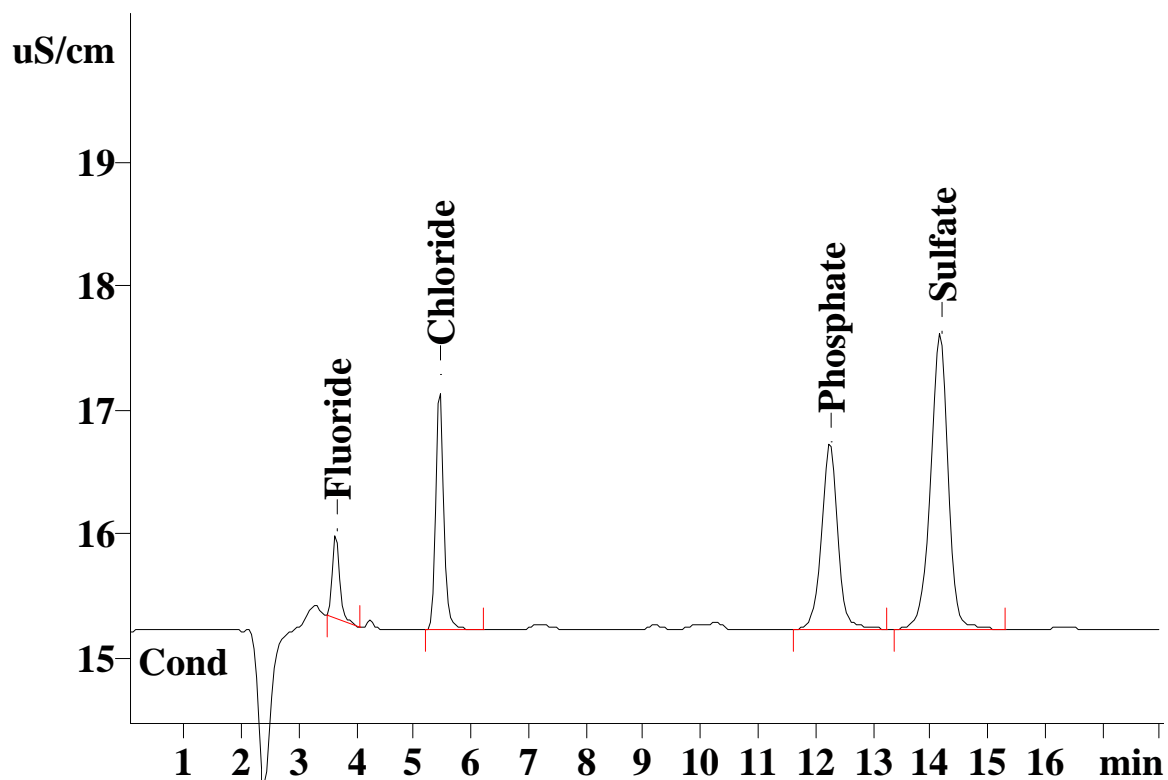
Column: 6.1006.520 Metrosep A Supp 5 – 150

Eluent: 3.2 mmol/L sodium carbonate
1.0 mmol/L sodium hydrogencarbonate

Suppressor: Metrohm Suppressor Module (MSM, 50 mmol/L sulfuric acid)

Flow: 0.7 mL/min

Injection Volume: 250 nL (internal loop)



Results:	Fluoride mg/L	Chloride mg/L	Phosphate mg/L	Sulfate mg/L
	6.05	19.1	29.6	50.6

For the determination of fermentable sugars in the same sample see AN P-23.