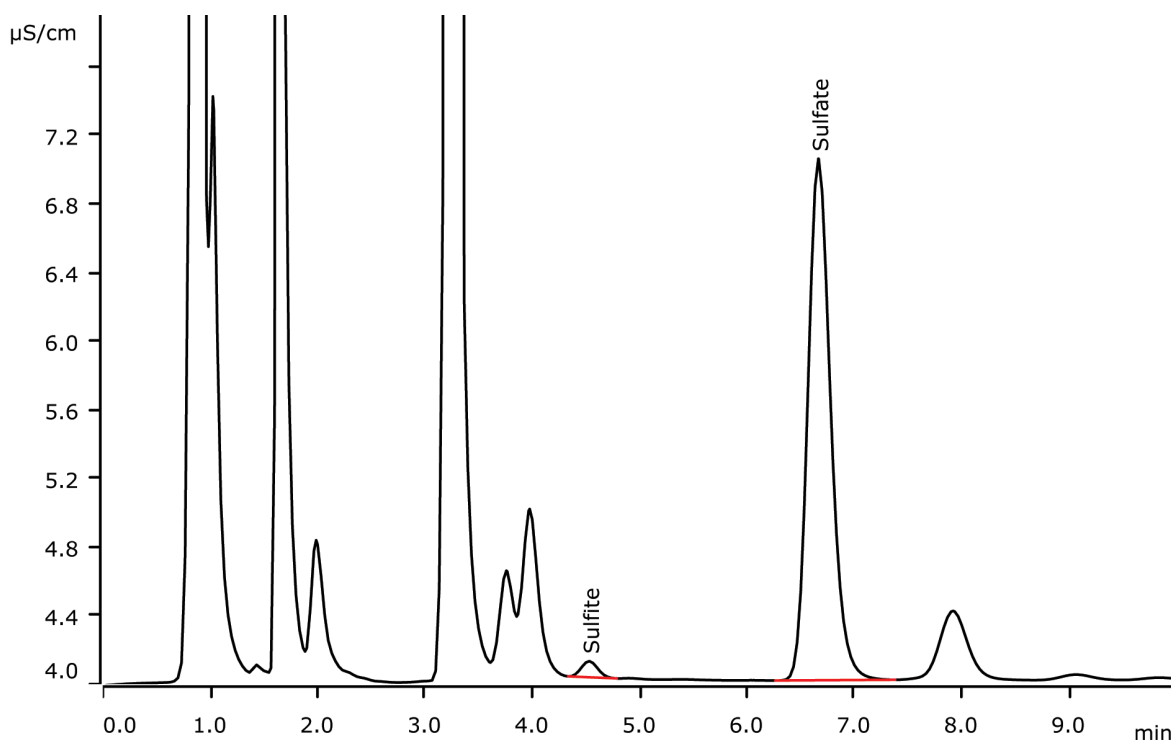


Fast IC: Sulfite besides sulfate in beer within less than ten minutes



Fast IC means high sample throughput on short columns with relatively high flow rates and strong eluents. In beer, sulfite can be well separated from sulfate and other anions within less than ten minutes on a Metrosep A Supp 10 - 100/4.0.

Results

Anion	Concentration [mg/L]
Sulfite	0.13
Sulfate	n.q.

Sample

Standard solution

Sample preparation

Dilution 1 : 10

Columns

Metrosep A Supp 10 - 100/4.0	6.1020.010
Metrosep A Supp 10 Guard/4.0	6.1020.500

Solutions

Eluent (941 Eluent Production Module)	5.0 mmol/L sodium carbonate 5.0 mmol/L sodium hydrogen carbonate
Suppressor regenerant	500 mmol/L sulfuric acid
Rinsing solution	STREAM

Analysis

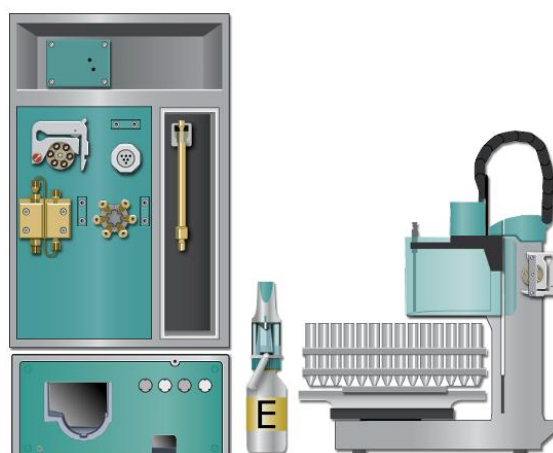
Conductivity detection after sequential suppression

Instrumentation

940 Professional IC Vario ONE/SeS/PP	2.940.1500
IC Conductivity Detector	2.850.9010
941 Eluent Production Module	2.941.0010
800 Dosino	2.800.0010
858 Professional Sample Processor	2.858.0020
MSM Rotor A	6.2832.000

Parameters

Flow rate	1.8 mL/min
Injection volume	20 µL
P _{max}	25 MPa
Recording time	3.2 min
Column temperature	45 °C



www.metrohm.com

 **Metrohm**