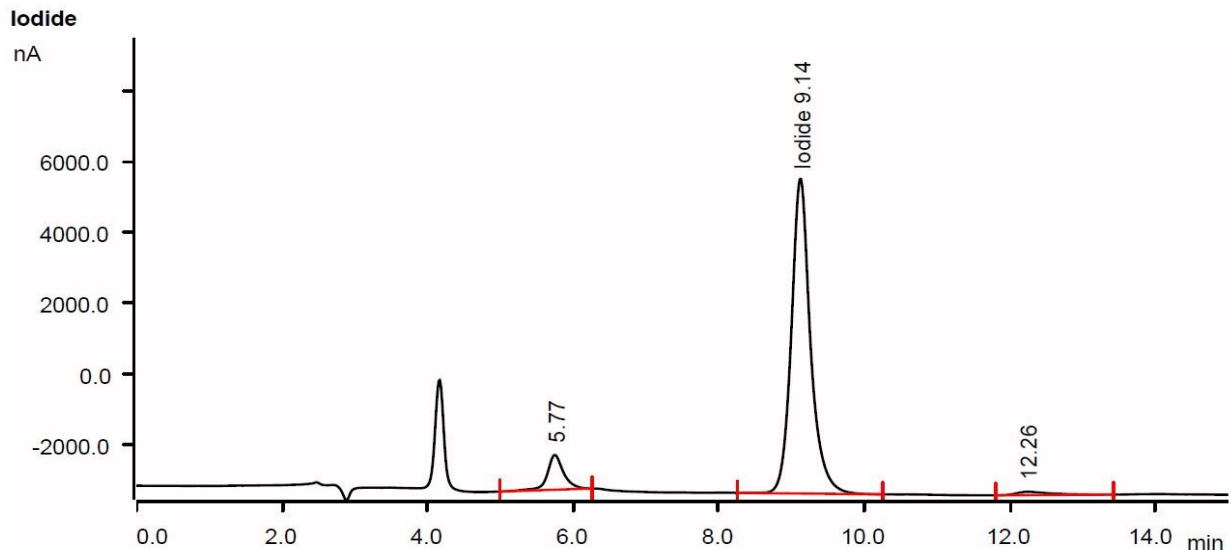


Analysis of Iodide in Milk Products

Ion Chromatography – A convenient solution



Iodine is an important component of human growth. Low levels lead to poor health and mental deficiencies. High levels can be a problem for babies with thyroid issues, thus careful monitoring of milk used for baby formula is required.

The current industry standard requires a labour intensive sample preparation followed by analysis with an ICP.

Metrohm IC provides a fast, convenient alternative.

Key advantages:

- Minimal sample preparation with Metrohm In-line Sample Preparation techniques
- Low detection limits
- Low operation costs
- Proficient on-site service and support by a local team.



Contact: info@mep.net.au