

# 200mm and 8" Test Sieve Pricing 2018^

Aperture size	Price AU\$
metric	200mm and 8"
20 µm	\$ 1,380.00
25 µm	\$ 720.00
32 µm	\$ 420.00
36 µm	\$ 420.00
38 µm	\$ 420.00
40 µm	\$ 300.00
45 µm	\$ 300.00
50 µm	\$ 250.00
53 µm	\$ 250.00
56 µm	\$ 220.00
63 µm	\$ 200.00
71 µm	\$ 200.00
75 µm	\$ 200.00
80 µm	\$ 200.00
90 µm	\$ 200.00
100 µm	\$ 200.00
106 µm	\$ 200.00
112 µm	\$ 200.00
125 µm	\$ 200.00
140 µm	\$ 200.00
150 µm	\$ 200.00
160 µm	\$ 200.00
180 µm	\$ 200.00
200 µm	\$ 200.00
212 µm	\$ 200.00
224 µm	\$ 200.00
250 µm	\$ 200.00
280 µm	\$ 200.00
300 µm	\$ 200.00
315 µm	\$ 200.00
355 µm	\$ 200.00
400 µm	\$ 200.00
425 µm	\$ 200.00
450 µm	\$ 200.00
500 µm	\$ 200.00
560 µm	\$ 200.00
600 µm	\$ 200.00
630 µm	\$ 200.00
710 µm	\$ 200.00
800 µm	\$ 200.00
850 µm	\$ 200.00
900 µm	\$ 200.00
1.00 mm	\$ 210.00

Aperture size	Price AU\$
metric	200mm and 8"
1.12 mm	\$ 210.00
1.18 mm	\$ 210.00
1.25 mm	\$ 210.00
1.40 mm	\$ 210.00
1.60 mm	\$ 210.00
1.70 mm	\$ 210.00
1.80 mm	\$ 210.00
2.00 mm	\$ 210.00
2.24 mm	\$ 210.00
2.36 mm	\$ 210.00
2.50 mm	\$ 210.00
2.80 mm	\$ 250.00
3.15 mm	\$ 250.00
3.35 mm	\$ 250.00
3.55 mm	\$ 250.00
4.00 mm	\$ 250.00
4.50 mm	\$ 250.00
4.75 mm	\$ 250.00
5.00 mm	\$ 250.00
5.60 mm	\$ 250.00
6.30 mm	\$ 250.00
6.70 mm	\$ 250.00
7.10 mm	\$ 250.00
8.00 mm	\$ 250.00
9.00 mm	\$ 250.00
9.50 mm	\$ 250.00
10.00 mm	\$ 290.00
11.20 mm	\$ 290.00
12.50 mm	\$ 290.00
13.20 mm	\$ 290.00
14.00 mm	\$ 290.00
16.00 mm	\$ 290.00
18.00 mm	\$ 290.00
19.00 mm	\$ 290.00
20.00 mm	\$ 290.00
22.40 mm	\$ 290.00
25.00 mm	\$ 290.00
26.50 mm	\$ 290.00
28.00 mm	\$ 290.00
31.50 mm	\$ 300.00
35.50 mm	\$ 300.00
37.50 mm	\$ 300.00
40.00 mm	\$ 300.00

Aperture size	Price AU\$
metric	200mm and 8"
45.00 mm	\$ 300.00
50.00 mm	\$ 300.00
53.00 mm	\$ 300.00
56.00 mm	\$ 300.00
63.00 mm	\$ 300.00
71.00 mm	\$ 300.00
75.00 mm	\$ 300.00
80.00 mm	\$ 300.00
90.00 mm	\$ 300.00
100.00 mm	\$ 300.00
106.00 mm	\$ 300.00
112.00 mm	\$ 300.00
125.00 mm	\$ 300.00

Ask us  
about our  
full range of  
sieves and  
patented  
3D sieve  
shakers



Retsch Sieves come in a variety of diameters and apertures. For diameters of 100mm, 150mm, 305mm, 400mm and 450mm.

Please call our sales support on 02 8899 5200 or email

[info@metrohm.com.au](mailto:info@metrohm.com.au)

^All above pricing does not include GST and is subject to change

# RETSCH Test Sieves

With Ø of 200 / 203 mm (8")



The demands made of particle size analysis are constantly increasing. This is also reflected in the requirements made in the standard ISO 3310. RETSCH has developed a unique manufacturing process that guarantees a previously unattained quality and consistency in sieve production. In addition, a logistic manufacturing system makes it possible to record each and every material used in the process.

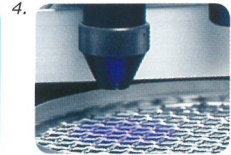
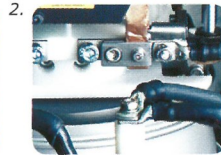
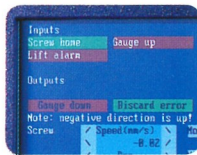
The sieves are fully compatible with RETSCH's existing products and can be combined with other sieves without any problems. Each sieve that leaves our company includes a test report or, at your request, a special inspection certificate in conformity with ISO 3310-1. RETSCH's calibration certificates ensure a higher statistical reliability and document our continual quest for perfection.

RETSCH's sieves are available in the four most widely used sizes:  
**200 x 50 mm · 200 x 25 mm**  
**203 x 50 mm (8"x 2") · 203 x 25 mm (8"x 1").**

Production process: 1.

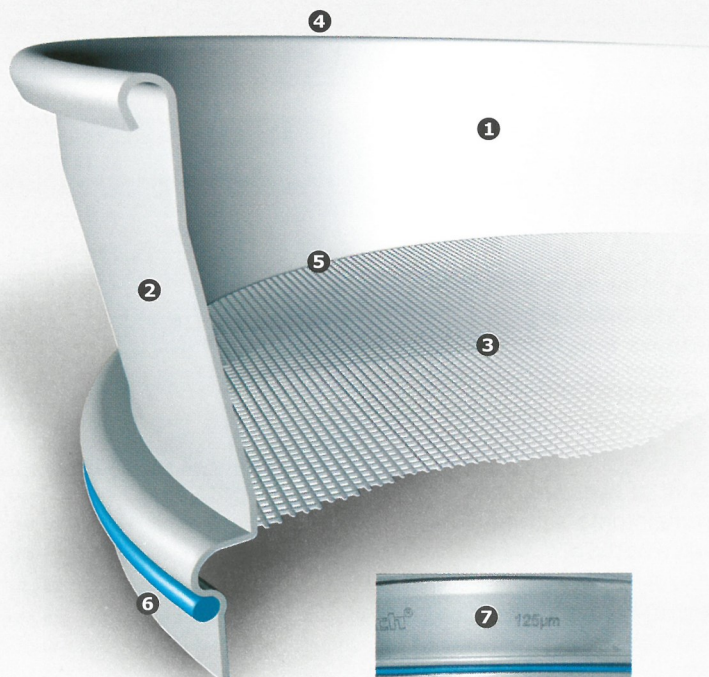
1. Data entry
2. Welding
3. Lasering

4. 100% optical inspection



## Seven Unique Benefits

Our unique manufacturing process ensures an optimum design for each sieve. Experience yourself the increased quality of your analyses as well as improved handling and service life of the sieves.



1. One piece construction and fabric-transition without any grooves to prevent cross contamination (no solder\*, no epoxy, no residues, etc.)
2. A high degree of corrosion resistance and ease of cleaning due to high-alloy stainless steel
3. 15% lighter than traditional sieves while at the same time increasing the free sieve area
4. Previously unattained product quality due to fully automatic production and extensive optical inspection with optimum design
5. Innovative resistance welding technology guarantees permanently tight sieve fabric
6. Maximum stability and optimum sealing when used in sieve stacks
7. Clear and precise labeling of the sieves with full traceability based on individualized laser engraving

\*for sieves up to 5.6 mm (#3.1/2).  
 As from 6.3 mm lead-free silver solder is used.